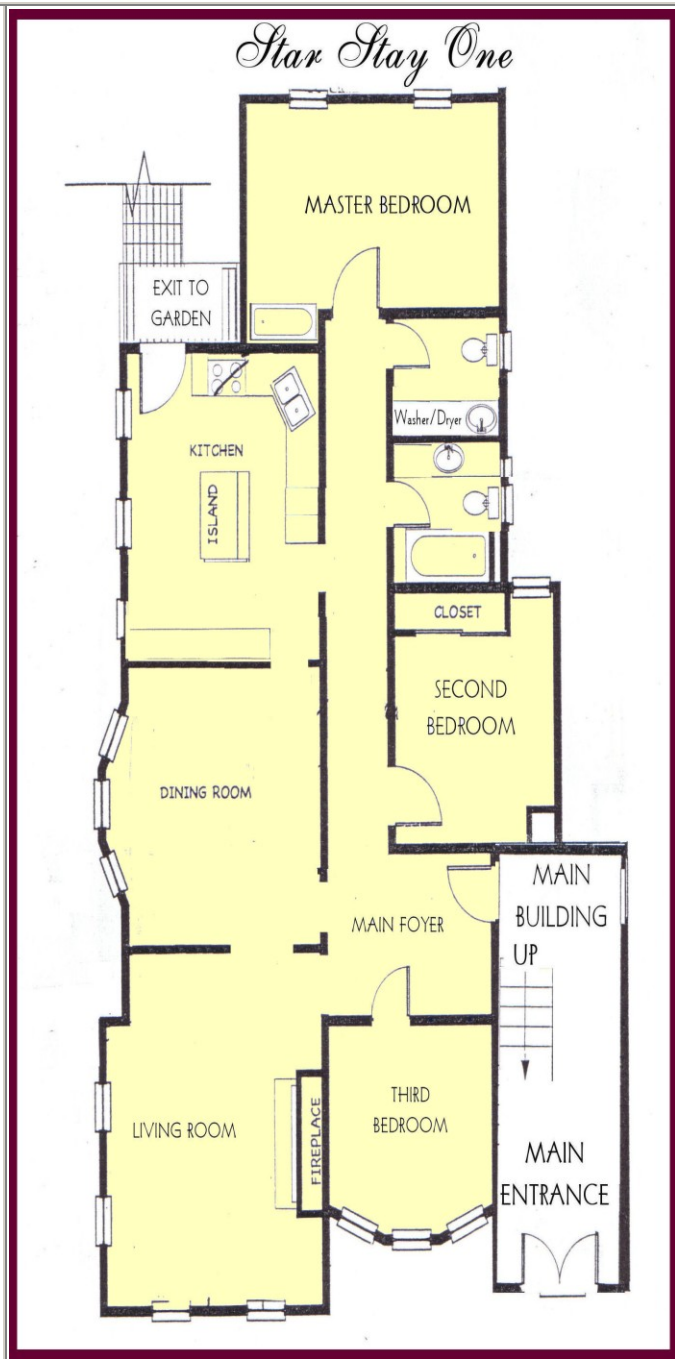




## Suite Summary

- ❖ **Style:** 3 bedroom; 2 bathroom; full kitchen; dining room and living room
- ❖ **Size:** 1,660 sq. ft. (155 M<sup>2</sup>)
- ❖ **Two entrances:** one from main foyer and another from kitchen onto the back meditation garden
- ❖ **Beds:** Master has queen and sofa bed; 2nd bdrm has twins; 3rd bdrm has single; and there are portable mattresses available
- ❖ **Maximum Capacity:** 8 persons
- ❖ **Ensuite Laundry facilities:** yes, this suite has ensuite washer/dryer
- ❖ **Bathtub** in master bedroom is jetted and has easy access.
- ❖ **Appliance:** LCD TV, stereo, DVD player,
- ❖ **AMENITIES:**
  - room service
  - bottled mineral water
  - cable tv/movies on demand
  - choice of non smoking rooms
  - deluxe toiletries
  - express check out
  - evening turndown service
  - hairdryers
  - irons and ironing boards
  - international direct dial telephones
  - Fresh fruit
  - plush bathrobes
  - safe
  - tea and coffee making facilities
  - us/uk modem lines
  - voicemail
- ❖ **NOTES:** This is also our display suite and, thus, not always available for let.



*Pendrell Suites*  
Luxurious Accommodation in Downtown Vancouver

*Book Your Unique Experience Now!*  
Toll Free (North America) 1 (888) 250-7211 Tel. (604) 609-2770  
Fax (604) 685-8675 Email: [yuko@pendrellsuites.com.com](mailto:yuko@pendrellsuites.com.com)  
[www.pendrellsuites.com.com](http://www.pendrellsuites.com.com)